



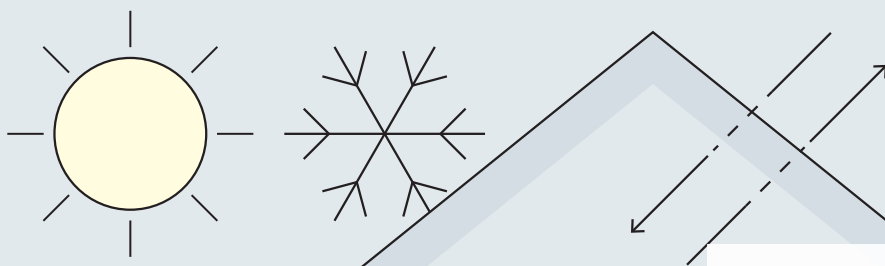
LIGNATHERM WOOD FIBRE INSULATION BOARD



A GOOD CHOICE

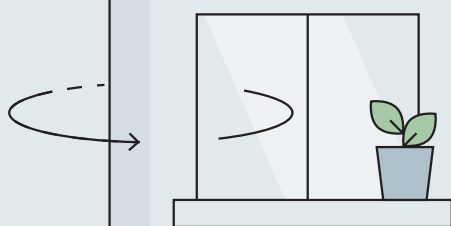
Wood fibre insulation boards – ideal for people and the environment.





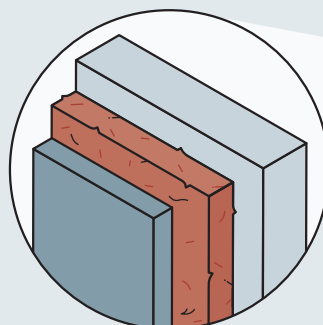
BREATHABLE LIVING

Wood fibre insulation boards are open-pored and allow moisture to escape from the inside to the outside. This regulates air humidity, creating a pleasant indoor climate and preventing building damage. In addition, they can withstand up to three months of exposure to the elements in case of leaks.



BALANCING PROTECTION

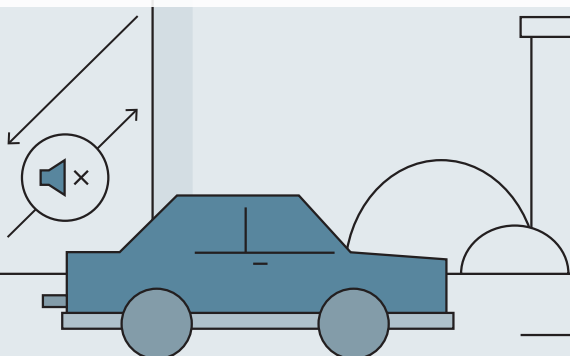
Wood fibre insulation boards not only protect against summer heat and winter cold but also provide a comfortable temperature balance throughout the day.



WOOD FIBRE INSULATION BOARD

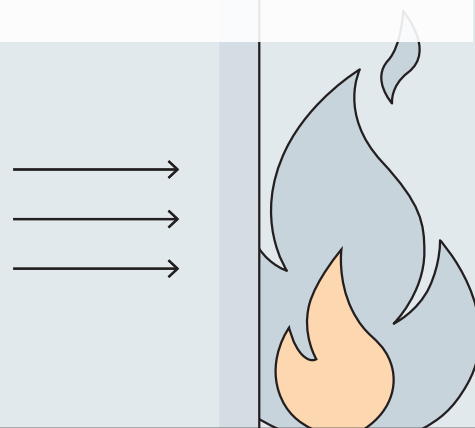
IDEAL SOUND INSULATION

Thanks to their high density and unique properties, wood fibre insulation boards provide effective and efficient sound insulation, keeping disruptive noises out.



NO CHANCE FOR FLAMES

In the event of a fire, wood fibre insulation boards form a layer of charring that slows the spread of fire. Compressed boards achieve Class RF 3 ("permissible fire contribution") even without the addition of fire retardants.



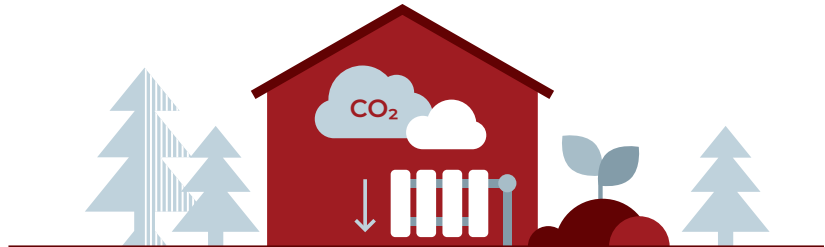
SCHILLIGER LIGNATHERM – NATURALLY MADE FROM SWISS WOOD

At our Swiss facilities, we process exclusively wood from regional forestry. This strengthens Swiss forestry, reduces transportation needs and contributes significantly to improving the ecological footprint of your construction project. Furthermore, Lignatherm wood fibre insulation boards are not only made from Swiss wood but are also manufactured in Switzerland. Therefore, they bear the exclusive Swiss Wood label.



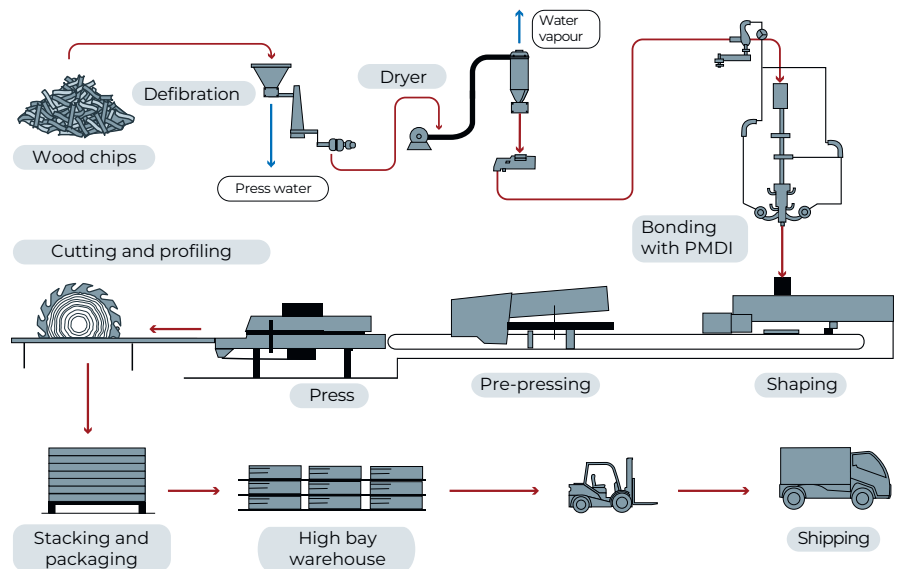
GOOD FOR THE CLIMATE

Lignatherm wood fibre insulation boards turn buildings into large CO₂ storage units by absorbing far more CO₂ than is released during the resource-efficient and fully automated production process. They also contribute to energy savings for heating.



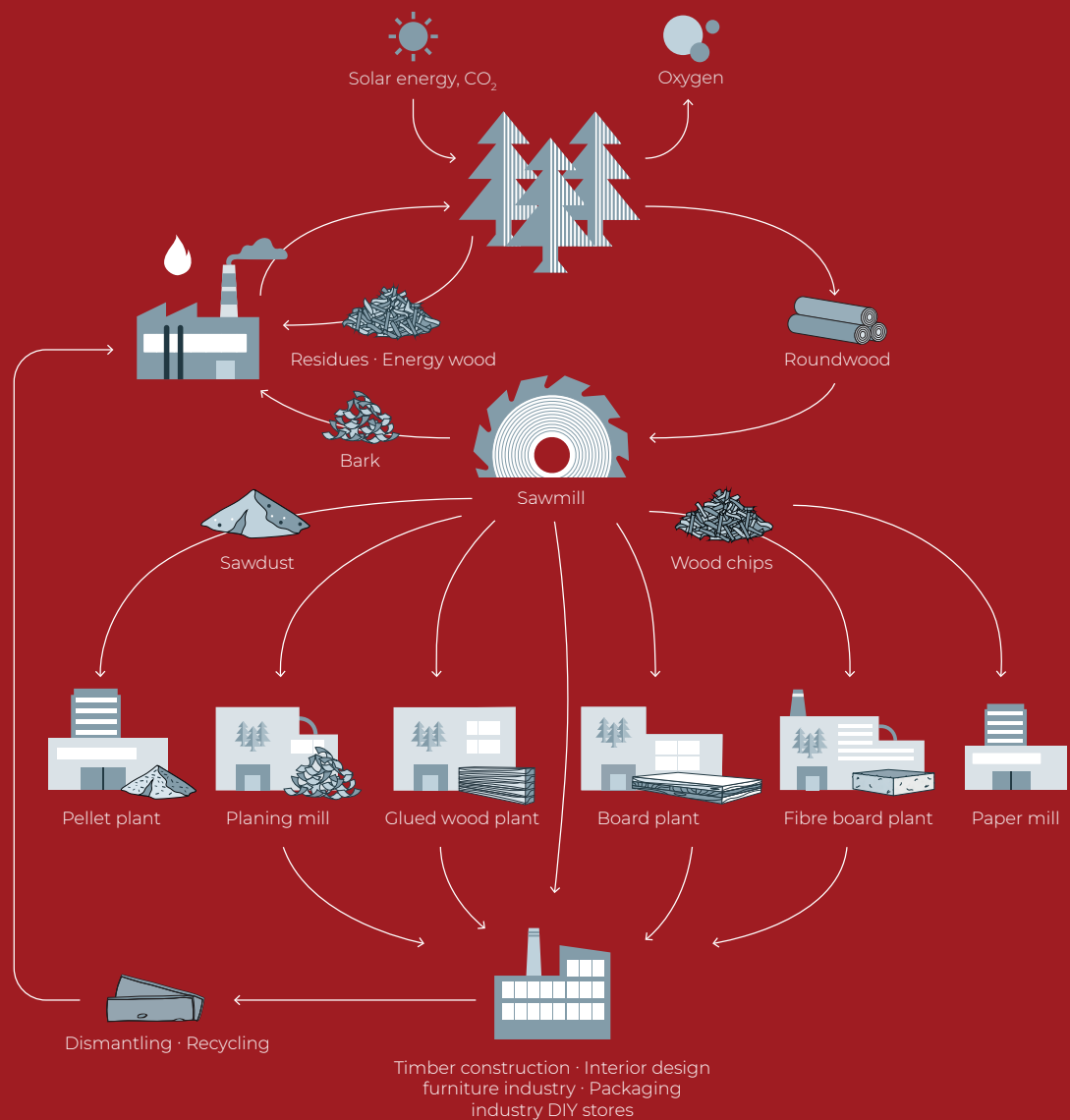
SUSTAINABLE AND EFFICIENT PRODUCTION

Schilliger Holz utilises residual wood from its own operations and nearby sources to produce Lignatherm wood fibre insulation boards, ensuring both ecological sustainability and efficiency.



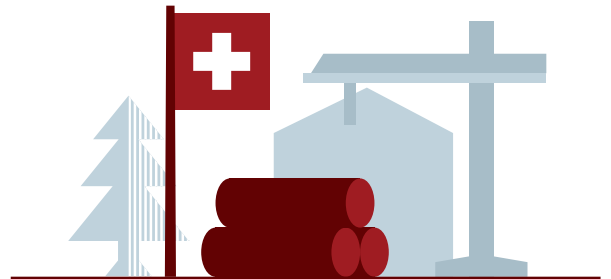
SCHILLIGER HOLZ – PRACTISING CIRCULAR ECONOMY

At Schilliger Holz, nothing goes to waste. Every product is utilised optimally in accordance with the cascade principle, prioritising material use over energy recovery. Wood by-products are directed to our fibre insulation board plant as well as to nearby paper and chipboard industries. Sawdust is processed into pellets at Agro Energie Rigi next door, while bark is used for energy production at the same facility. Schilliger Holz obtains power and heat exclusively from fossil-free sources through Agro Energie Rigi and our solar park. Transport logistics also follow the circular principle: wherever possible, wood product deliveries are combined with roundwood collection from the same region, minimising empty trips and maximising efficiency.



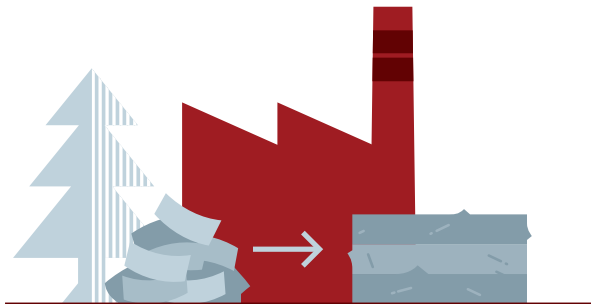
YOUR ADVANTAGES AT A GLANCE

TOP QUALITY WITH SWISS WOOD FROM SWISS PRODUCTION



SWISS QUALITY FROM SWISS PRODUCTION

Schilliger Lignatherm wood fibre insulation boards significantly increase the proportion of Swiss wood in your construction project.



OUR RAW MATERIAL, OUR PRODUCT

The base material for Lignatherm products is wood chips, a by-product from our sawmills. This eliminates the need for costly raw material purchases and keeps transport routes short.



EVERYTHING FROM A SINGLE SOURCE

Comprehensive wood products for your entire construction project — lumber, insulation and siding — all sourced from a single provider and delivered directly to your building site.



STREAMLINED PRODUCT RANGE

We offer a carefully curated range of products to streamline logistics and simplify storage.

LIGNATHERM 140/180

The multifunctional board for roofs, walls and interior construction.



TECHNICAL DATA

Density [kg/m³]	140	180
Declared thermal conductivity λ_D [W/m · K]	0.040	0.043
Vapour diffusion μ	3	3
Fire behaviour acc. to EN 13501	E	E
Compressive strength at 10% deformation [kPa]	100	150
Tensile strength perpendicular to board plane [kPa]	20	25
Specific heat capacity [J/kg · K]	2100	2100
Designation	WF-EN13171-T5-DS(70,-)2-CS(10\Y) 100-TR20-WS1.0-MU3-AFr100	WF-EN13171-T5-DS(70,-)2-CS(10\Y)150- TR25-WS1.0-MU3-AFr100

DELIVERY FORMATS LIGNATHERM 140

Edge: 

Thickness [mm]	Length net [mm]	Width net [mm]	Number / pallet [pcs]	Area / Pallet [m²]	Weight / pallet [kg]	Pallet height [mm]
60	2,531	586	40	59.3	540	1320
40	1,861	586	60	65.4	400	1320
60	1,861	586	40	43.6	400	1320
80	1,861	586	30	32.7	400	1320
100	1,861	586	24	26.2	400	1320
120	1,861	586	20	21.8	400	1320
140	1,861	586	16	17.4	375	1240
160	1,861	586	14	15.3	375	1240
180	1,861	586	12	13.1	365	1200
200	1,861	586	12	13.1	400	1320

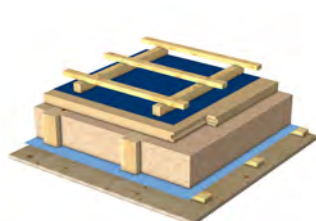
DELIVERY FORMATS LIGNATHERM 180

Edge: 

Thickness [mm]	Length net [mm]	Width net [mm]	Numbers / pallet [pcs]	Area / pallet [m²]	Weight / pallet [kg]	Pallet height [in mm]
35	2,531	586	68	100.9	685	1,310
40	2,531	586	60	89	685	1,320
60	2,531	586	40	59.3	685	1,320



Sub-roof



Ventilated facade



Rendered facade (ETICS)



LIGNATHERM 110

The ideal on-rafter insulation



TECHNICAL DATA

Density [kg/m³]	110
NDDeclared thermal conductivity λ_D [W/m · K]	0.038
Vapour diffusion μ	3
Fire behaviour acc. to EN 13501	E
Compressive strength at 10% deformation [kPa]	50
Tensile strength perpendicular to board plane [kPa]	5
Specific heat capacity [J/kg · K]	2100
Designation	WF-EN13171-T4-CS(10\Y)50-TR2.5-WS2.0-MU3-AFr30

DELIVERY FORMATS LIGNATHERM 110

Edge:  

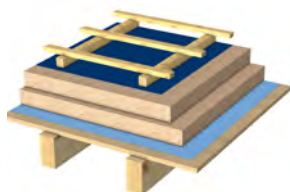
Thickness [mm]	Length net [mm]	Width net [mm]	Number / pallet [pcs]	Area / Pallet [m²]	Weight / pallet [kg]	Pallet height [mm]
40	1,320	600	120	95.0	445	1,320
60	1,320	600	80	63.4	445	1,320
80	1,320	600	60	47.5	445	1,320
100	1,320	600	48	38.0	445	1,320
120	1,320	600	40	31.7	445	1,320

Edge:  

140	1,305	585	32	24.4	415	1,240
160	1,305	585	28	21.4	415	1,240
180	1,305	585	24	18.3	400	1,200
200	1,305	585	24	18.3	445	1,320
220	1,305	585	20	15.3	410	1,220
240	1,305	585	20	15.3	445	1,320



On-rafter insulation





SCHILLIGER HOLZ AG – ALWAYS NEAR YOU

Haltikon (CH)

Headquarters; sawn timber, planed timber, laminated timber, boards, sawmill by-products



Küssnacht am Rigi (CH)

Wood fibre insulation boards



Perlen (CH)

Sawn timber, sawmill by-products



Volgelsheim (FR)

Sawn timber, finger-jointed solid timber, boards, sawmill by-products



SCHILLIGER HOLZ

Haltikon 33
CH-6403 Küssnacht am Rigi

+41 41 854 08 00

info@schilliger.ch
www.schilliger.ch

SCHILLIGER LIGNATHERM

Zugerstrasse 69
CH-6403 Küssnacht am Rigi

+41 41 854 08 00

info@schilliger.ch
www.schilliger.ch

